

10400 VINEYARD BOULEVARD OKLAHOMA CITY, OK 73120

Office Space For Lease

\$19.00/SF NNN

Suite D: 2,300 SF MOL

Suite H200: 1,250 SF MOL



NAIRED

COMMERCIAL
REAL ESTATE

NAIRED

405.840.0600

NAIRED.COM

ABBIEY SULLIVAN

405.863.7590

ABBIEY@NAIRED.COM

BOB SULLIVAN, CCIM

405.641.9798

RSULLIVAN@CCIM.NET



SUITE H200

PROPERTY HIGHLIGHTS

- Red Brick, Garden Style Offices
- Updated Interiors, Well Maintained Exteriors
- Ample Parking
- Zoned: C-3
- Built in 2008

LOCATION HIGHLIGHTS

- 9 Minutes to Lake Hefner Parkway
- Close Proximity to The Village, Nichols Hills, Quail Creek and Chisholm Creek Neighborhoods
- Close Proximity to Heritage Hall and Casady School
- Right Off the Corner of Penn and Hefner, in The Village
- Surrounded by Large Residential Population



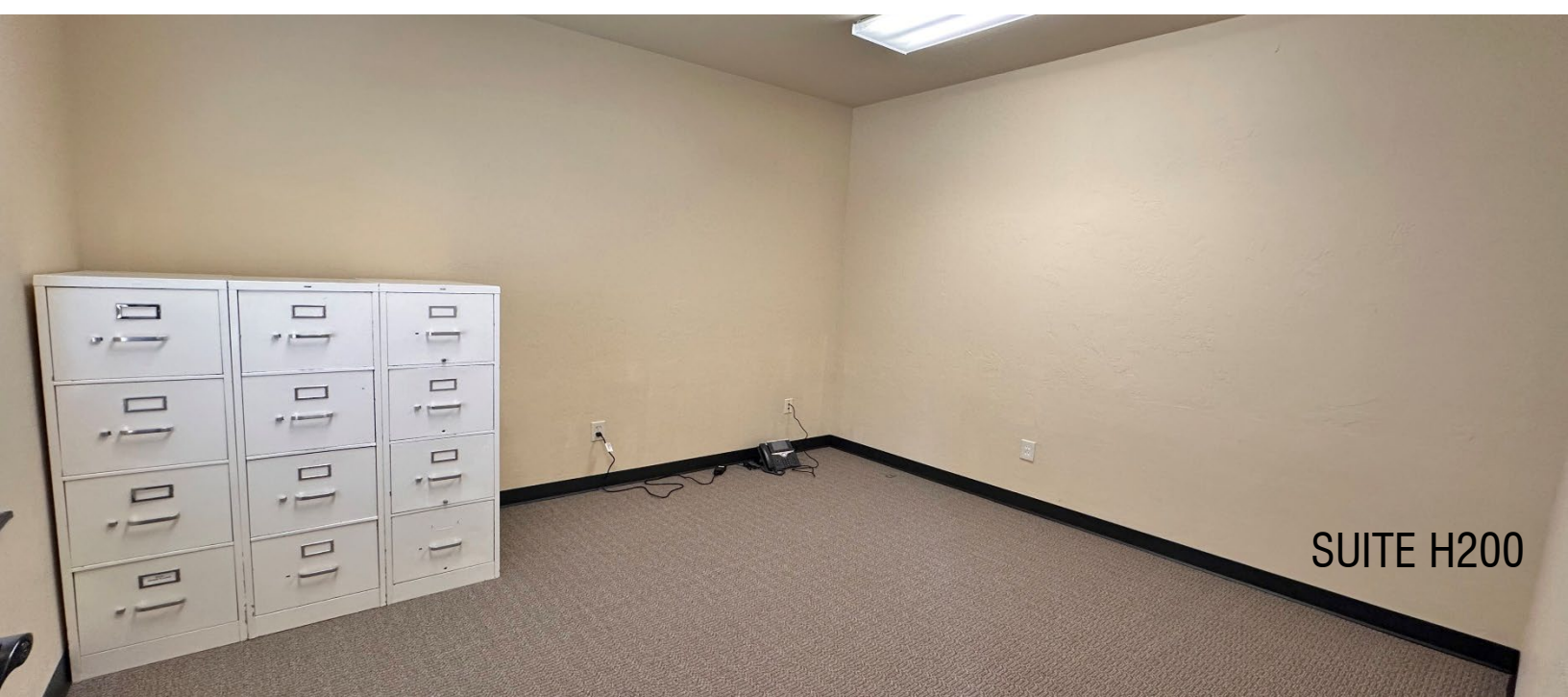
405.840.0600
NAIRED.COM

ABBIEY SULLIVAN
405.863.7590
ABBIEY@NAIRED.COM

BOB SULLIVAN, CCIM
405.641.9798
RSULLIVAN@CCIM.NET



SUITE H200



SUITE H200

NAIRED

405.840.0600

NAIRED.COM

ABBIEY SULLIVAN

405.863.7590

ABBIEY@NAIRED.COM

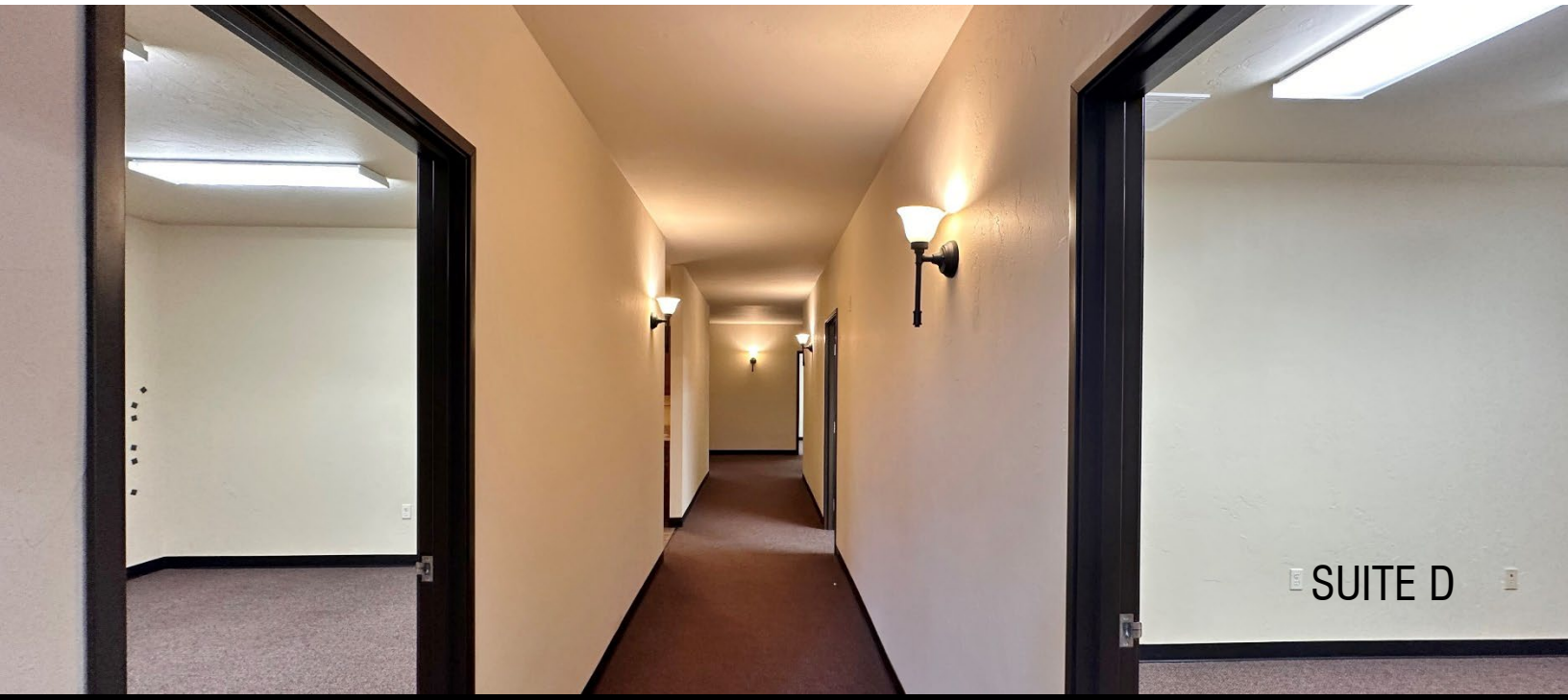
BOB SULLIVAN, CCIM

405.641.9798

RSULLIVAN@CCIM.NET



SUITE D



SUITE D

NAIRED

405.840.0600
NAIRED.COM

ABBIEY SULLIVAN
405.863.7590
ABBIEY@NAIRED.COM

BOB SULLIVAN, CCIM
405.641.9798
RSULLIVAN@CCIM.NET



DEMOGRAPHICS

	1 MILE	3 MILE	5 MILE
POPULATION	12,246	69,031	187,971
AVERAGE HOUSEHOLD INCOME	\$71,493	\$79,374	\$86,308
TOTAL HOUSEHOLDS	5,788	32,691	83,846

NAIRED

405.840.0600
NAIRED.COM

FOLLOW US @NAIRED_CRE



No warranty or representation, express or implied, is made as to the accuracy of the information contained herein, and the same is submitted subject to errors, omissions, change of price, rental or other conditions, prior to sale, lease, or financing, or withdrawal without notice, and of any special listing conditions imposed by our principals no warranties or representations are made as to the condition of the property or any hazards contained therein are any to be implied.