

Call For Lease Price



1212 S. Woodlawn Boulevard Wichita, Kansas 67218

PROPERTY HIGHLIGHTS

- **23,588 SF on 2.28 Acres MOL**
- Available December 1, 2024
- Former Locke Supply
- Adjacent to Ace Hardware
- Sub-Lease Ends: 12-31-2029



David Hartnack
+1 405 761 8955
davidh@naisullivangroup.com

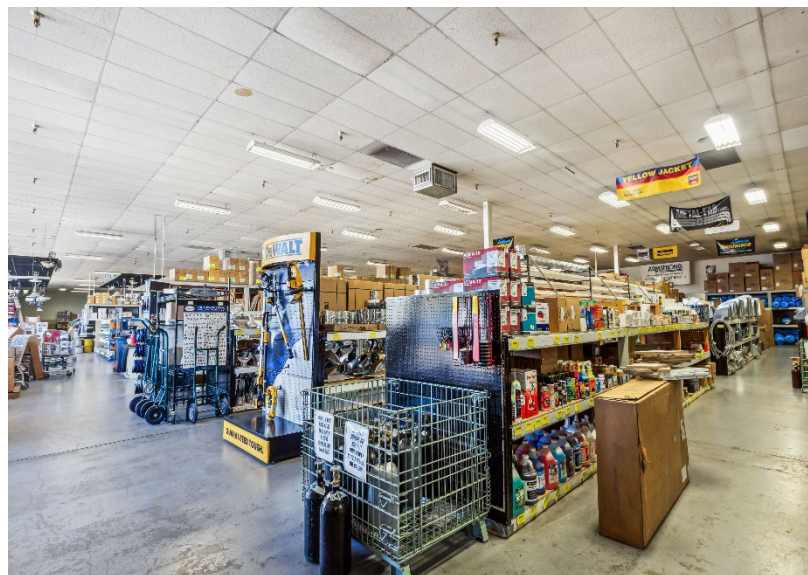
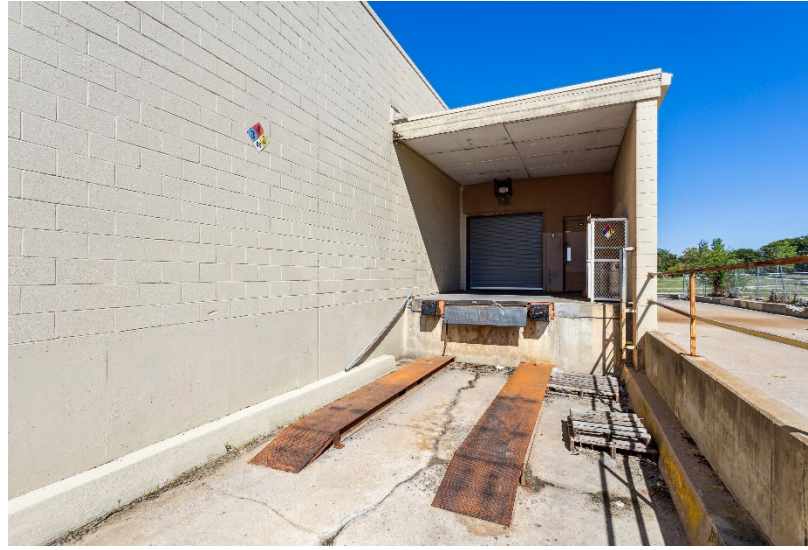
Sam Swanson
+1 405 208 2046
sam@naisullivangroup.com

Nathan Wilson
+1 405 760 5327
nathan@naisullivangroup.com

+1 405 840 0600 OFFICE

4045 N.W. 64th Street, Suite 340
Oklahoma City, OK 73116

www.naisullivangroup.com



David Hartnack
+1 405 761 8955
davidh@naisullivangroup.com

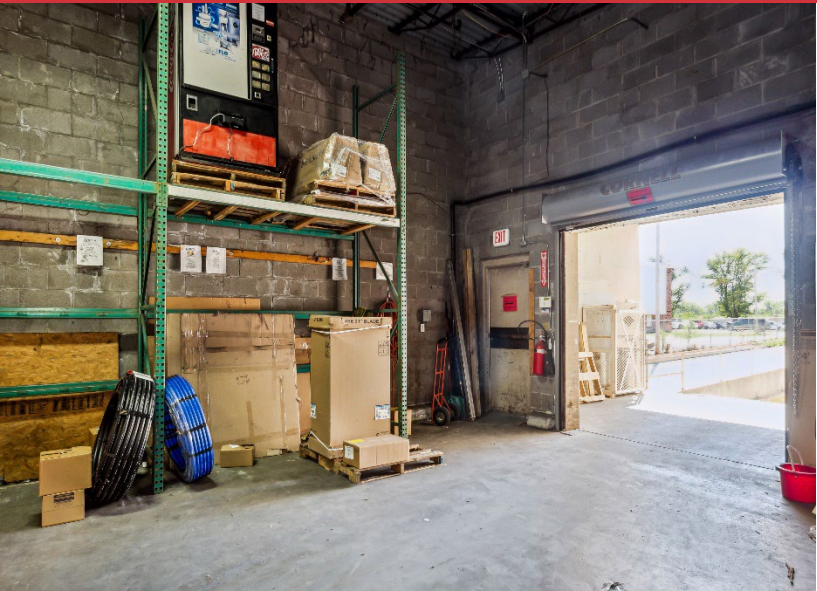
Sam Swanson
+1 405 208 2046
sam@naisullivangroup.com

Nathan Wilson
+1 405 760 5327
nathan@naisullivangroup.com

+1 405 840 0600 OFFICE

4045 N.W. 64th Street, Suite 340
Oklahoma City, OK 73116

www.naisullivangroup.com



David Hartnack
+1 405 761 8955
davidh@naisullivangroup.com

Sam Swanson
+1 405 208 2046
sam@naisullivangroup.com

Nathan Wilson
+1 405 760 5327
nathan@naisullivangroup.com

+1 405 840 0600 OFFICE

4045 N.W. 64th Street, Suite 340
Oklahoma City, OK 73116

www.naisullivangroup.com



Population	1 Mile: 12,566	3 Miles: 85,861	5 Miles: 181,493
Average Household Income	1 Mile: \$51,219	3 Miles: \$82,951	5 Miles: \$82,632
Total Households	1 Mile: 5,476	3 Miles: 35,147	5 Miles: 72,785

David Hartnack
 +1 405 761 8955
 davidh@naisullivangroup.com

Sam Swanson
 +1 405 208 2046
 sam@naisullivangroup.com

Nathan Wilson
 +1 405 760 5327
 nathan@naisullivangroup.com

+1 405 840 0600 OFFICE

4045 N.W. 64th Street, Suite 340
 Oklahoma City, OK 73116

www.naisullivangroup.com

NO WARRANTY OR REPRESENTATION, EXPRESS OR IMPLIED, IS MADE AS TO THE ACCURACY OF THE INFORMATION CONTAINED HEREIN, AND THE SAME IS SUBMITTED SUBJECT TO ERRORS, OMISSIONS, CHANGE OF PRICE, RENTAL OR OTHER CONDITIONS, PRIOR SALE, LEASE OR FINANCING, OR WITHDRAWAL WITHOUT NOTICE, AND OF ANY SPECIAL LISTING CONDITIONS IMPOSED BY OUR PRINCIPALS NO WARRANTIES OR REPRESENTATIONS ARE MADE AS TO THE CONDITION OF THE PROPERTY OR ANY HAZARDS CONTAINED THEREIN ARE ANY TO BE IMPLIED.