



Lease Price: \$10.00/SF NNN
NNN Charges: \$4.18/SF

1304 N.W. 23rd Street
Oklahoma City, Oklahoma 73106

PROPERTY HIGHLIGHTS

- Free Standing Retail Building
- Open Floor Plan
- Former Fashion Sports and Uniform Store
- 2 Offices and a Storage Area
- 1 ADA Restroom

LOCATION HIGHLIGHTS

- Located near NW 23rd and Classen Blvd
- Central Location Close to Midtown, Downtown and the Asian, Paseo, Plaza & Uptown 23rd Districts
- Easy Access to I-235, I-44 & I-40
- Close to the State Capitol and Oklahoma City University

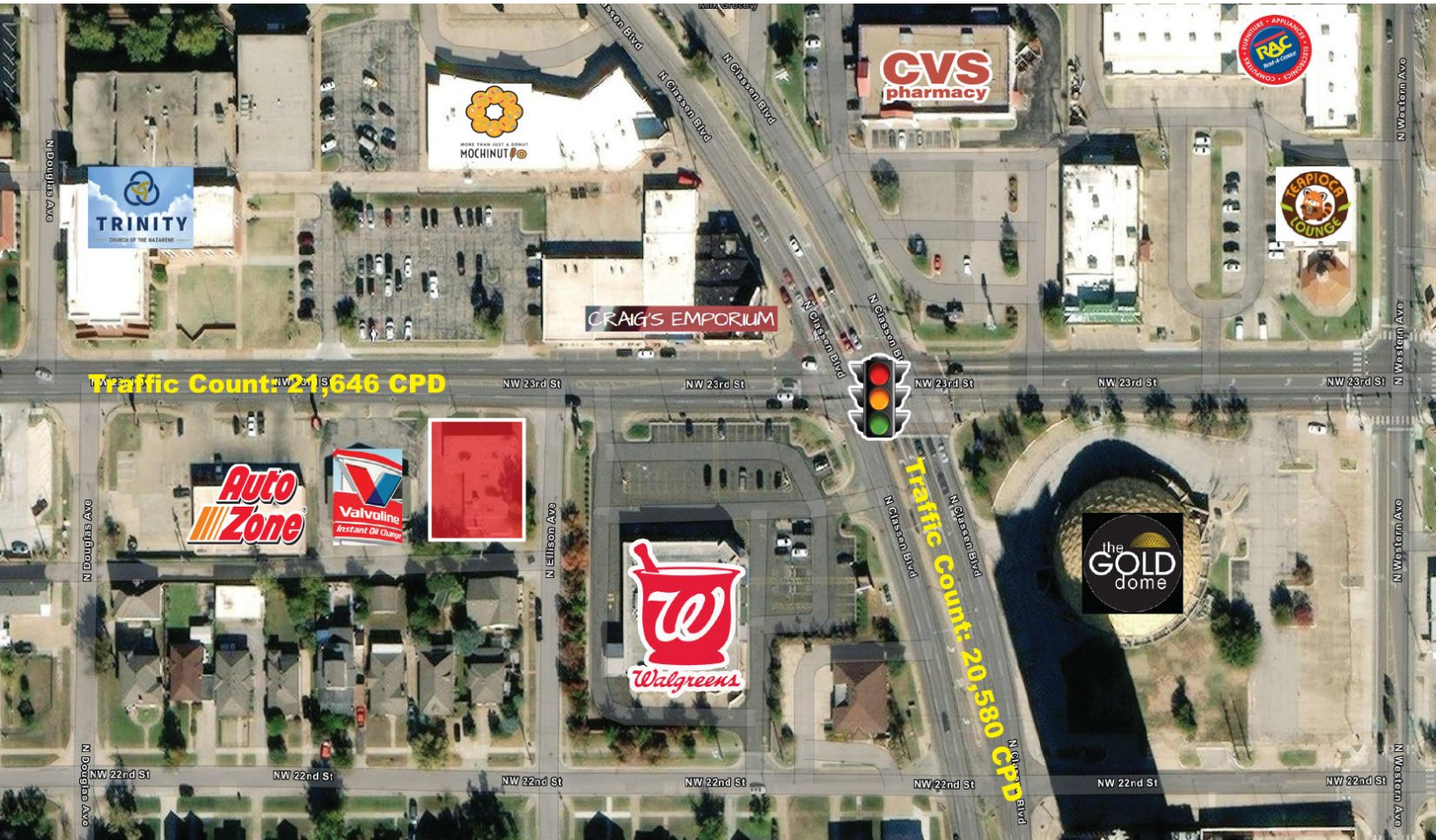
TOTAL SF	3,768 RSF on 0.17 Acres MOL
BUILT	1956
ZONED	C-3, Community Commercial District

Amanda Sullivan
+1 405 323 6423
amanda@naisullivangroup.com

+1 405 840 0600 OFFICE

4045 N.W. 64th Street, Suite 340
Oklahoma City, OK 73116

www.naisullivangroup.com

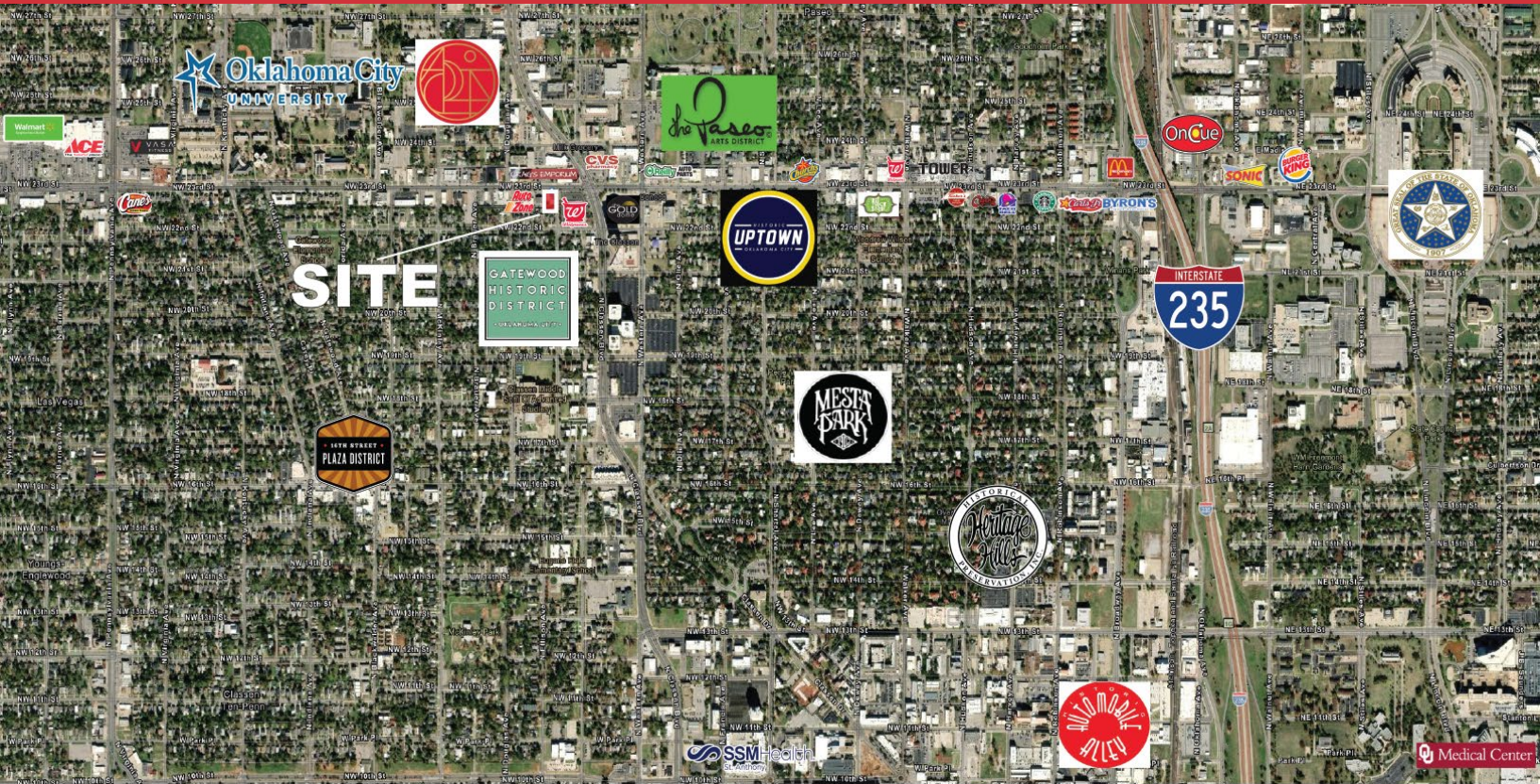


Amanda Sullivan
+1 405 323 6423
amanda@naisullivangroup.com

+1 405 840 0600 OFFICE

4045 N.W. 64th Street, Suite 340
Oklahoma City, OK 73116

www.naisullivangroup.com



Population	1 Mile: 18,484	3 Miles: 90,120	5 Miles: 216,970
Average Household Income	1 Mile: \$89,716	3 Miles: \$74,905	5 Miles: \$68,508
Total Households	1 Mile: 7,996	3 Miles: 39,463	5 Miles: 89,332

Amanda Sullivan
+1 405 323 6423
amanda@naisullivangroup.com

+1 405 840 0600 OFFICE

4045 N.W. 64th Street, Suite 340
 Oklahoma City, OK 73116

www.naisullivangroup.com