

2207-2255 W. MAIN STREET NORMAN, OK 73069

Retail Space For Lease

Call For Pricing

Suite 2211: 37,624 SF

REED

COMMERCIAL
REAL ESTATE



NAIRED

405.840.0600

NAIRED.COM

DAVID HARTNACK

405.761.8955

DAVID@NAIRED.COM

SAM SWANSON

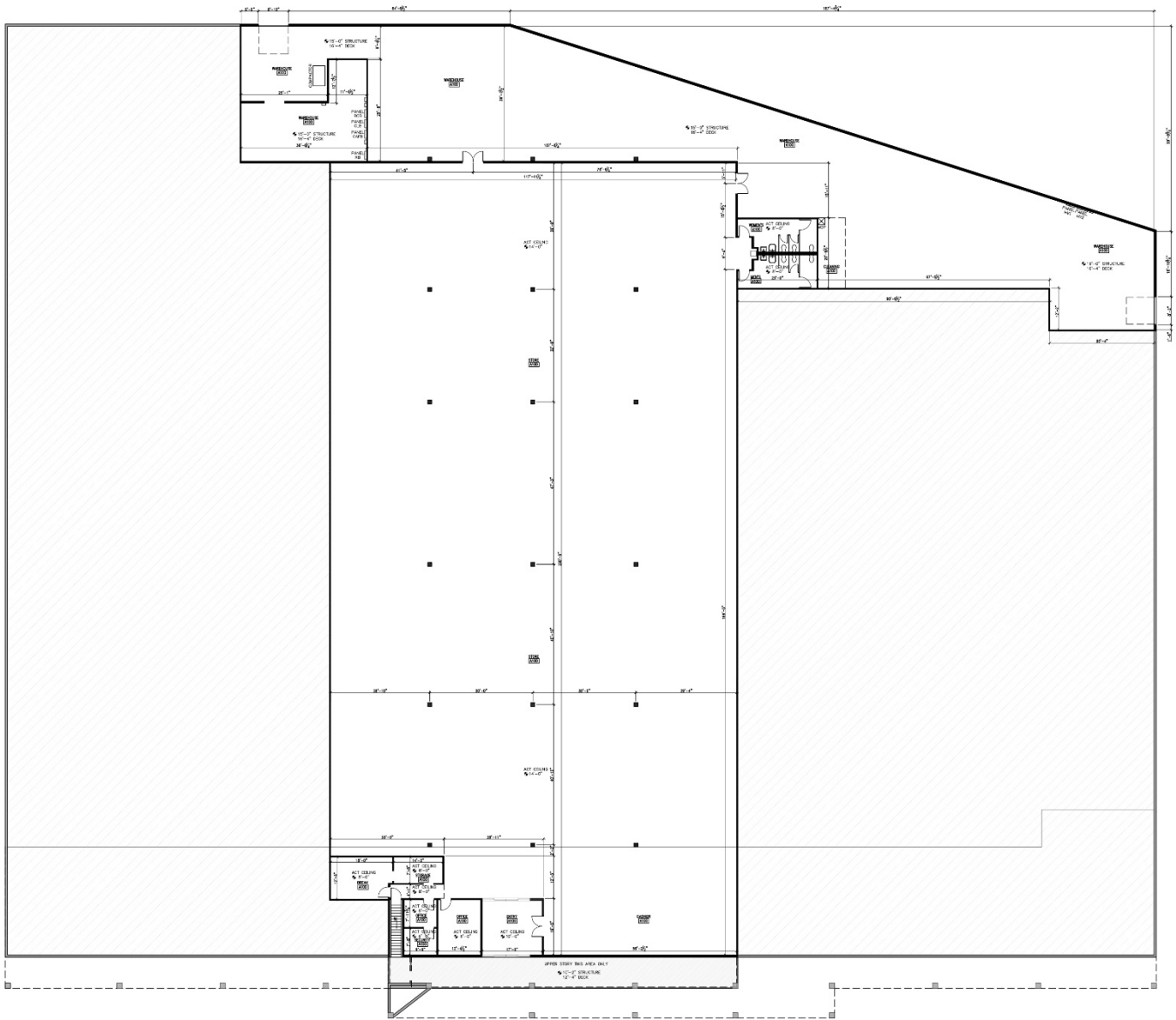
405.208.2046

SAM@NAIRED.COM

SAMUEL DUNHAM

405.207.7286

SAMUEL@NAIRED.COM



PROPERTY HIGHLIGHTS

- Located at the Highest Traffic Intersection in the city of Norman, OK
- Dock Access
- Large Parking Field

LOCATION HIGHLIGHTS

- 0.75 Miles from I-35
- 1.75 Miles from the University of Oklahoma

NAIRED

405.840.0600

NAIRED.COM

DAVID HARTNACK

405.761.8955

DAVID@NAIRED.COM

SAM SWANSON

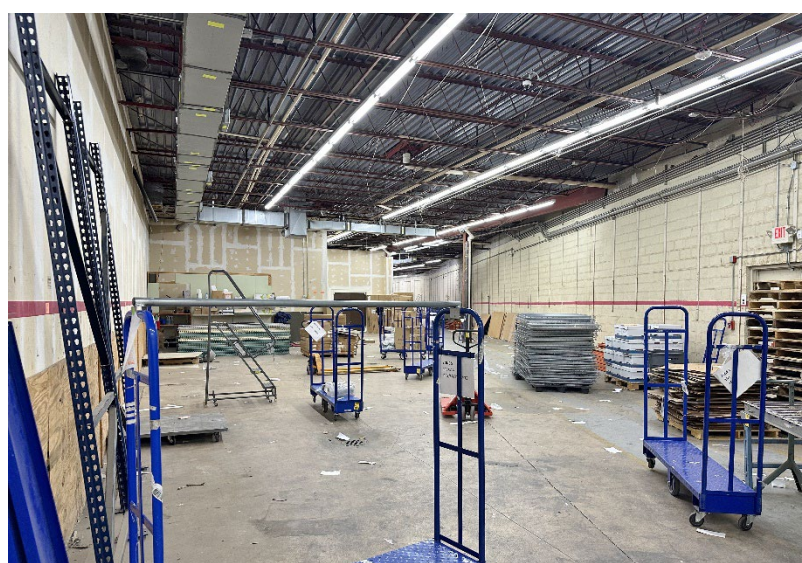
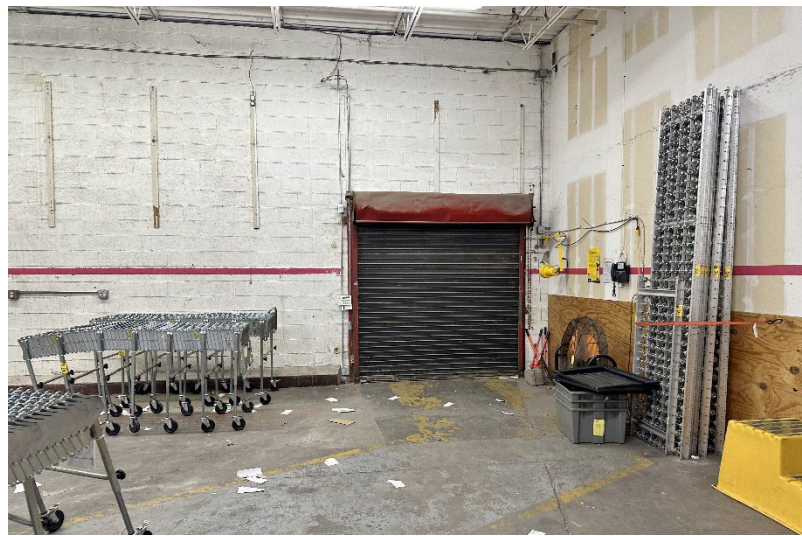
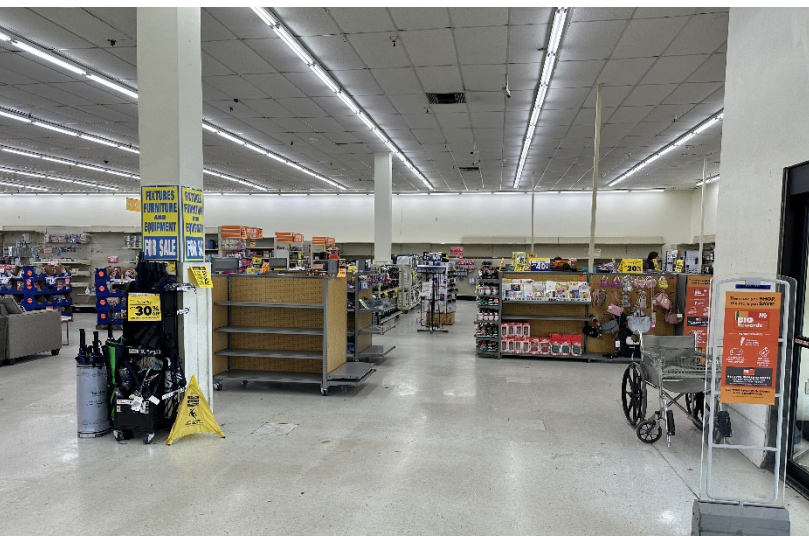
405.208.2046

SAM@NAIRED.COM

SAMUEL DUNHAM

405.207.7286

SAMUEL@NAIRED.COM



NAIRED

405.840.0600

NAIRED.COM

DAVID HARTNACK

405.761.8955

DAVID@NAIRED.COM

SAM SWANSON

405.208.2046

SAM@NAIRED.COM

SAMUEL DUNHAM

405.207.7286

SAMUEL@NAIRED.COM



DEMOGRAPHICS

	1 MILE	3 MILE	5 MILE
POPULATION	8,970	70,803	122,555
AVERAGE HOUSEHOLD INCOME	\$67,209	\$78,697	\$79,367
TOTAL HOUSEHOLDS	3,971	27,903	48,513

NAIRED

405.840.0600
NAIRED.COM

FOLLOW US @NAIRED_CRE



No warranty or representation, express or implied, is made as to the accuracy of the information contained herein, and the same is submitted subject to errors, omissions, change of price, rental or other conditions, prior to sale, lease, or financing, or withdrawal without notice, and of any special listing conditions imposed by our principals no warranties or representations are made as to the condition of the property or any hazards contained therein are any to be implied.