

Lease Price: \$14.00/SF Full Service



## 4901 Richmond Square

Oklahoma City, Oklahoma 73118

### PROPERTY HIGHLIGHTS

- Garden Style, Beautifully Landscaped, Red Brick Exterior
- 10+ Private Offices
- Partially Furnished
- 46 Surface Parks with 2 Entrances/Exits

### SUITES AVAILABLE

- Suite 1: 2,400 SF MOL
- Suite 4: 1,600 SF MOL

### LOCATION HIGHLIGHTS

- Within 1 Mile Proximity of The Oak Development, Classen Curve, Nichols Hills, Penn Square Mall, and many Hotels and Restaurants
- Right off the Intersection of I-44 and N.W. Expressway

TOTAL SF **8,194 SF on 0.27 Acres MOL**

BUILT **1989**

ZONED **C-3**

**Matthew Pierce**  
+1 405 203 3636  
matt@naisullivangroup.com

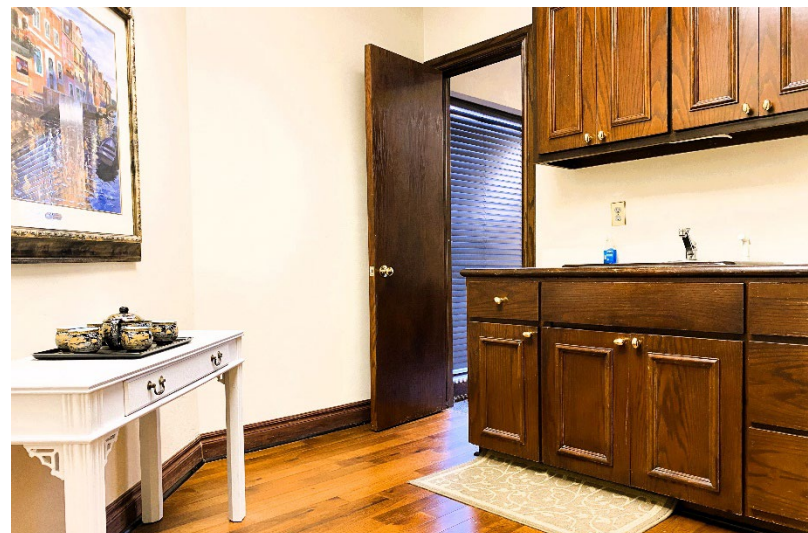
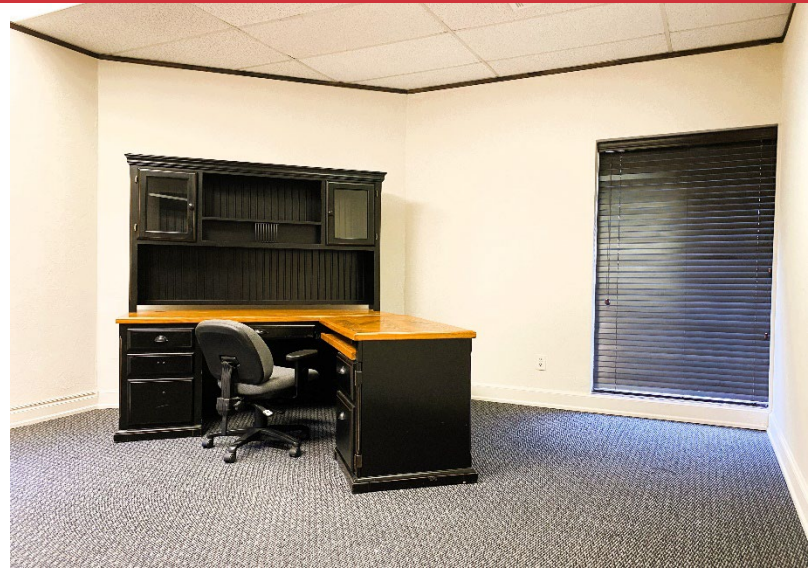
**Cade Flesner**  
+1 760 889 2305  
cade@naisullivangroup.com

**Abbey Sullivan**  
+1 405 863 7590  
abbey@naisullivangroup.com

**+1 405 840 0600 OFFICE**

4045 N.W. 64<sup>th</sup> Street, Suite 340  
Oklahoma City, OK 73116

[www.naisullivangroup.com](http://www.naisullivangroup.com)



**Matthew Pierce**  
+1 405 203 3636  
matt@naisullivangroup.com

**Cade Flesner**  
+1 760 889 2305  
cade@naisullivangroup.com

**Abbey Sullivan**  
+1 405 863 7590  
abbey@naisullivangroup.com

**+1 405 840 0600 OFFICE**

4045 N.W. 64<sup>th</sup> Street, Suite 340  
Oklahoma City, OK 73116

[www.naisullivangroup.com](http://www.naisullivangroup.com)



**Matthew Pierce**  
+1 405 203 3636  
matt@naisullivangroup.com

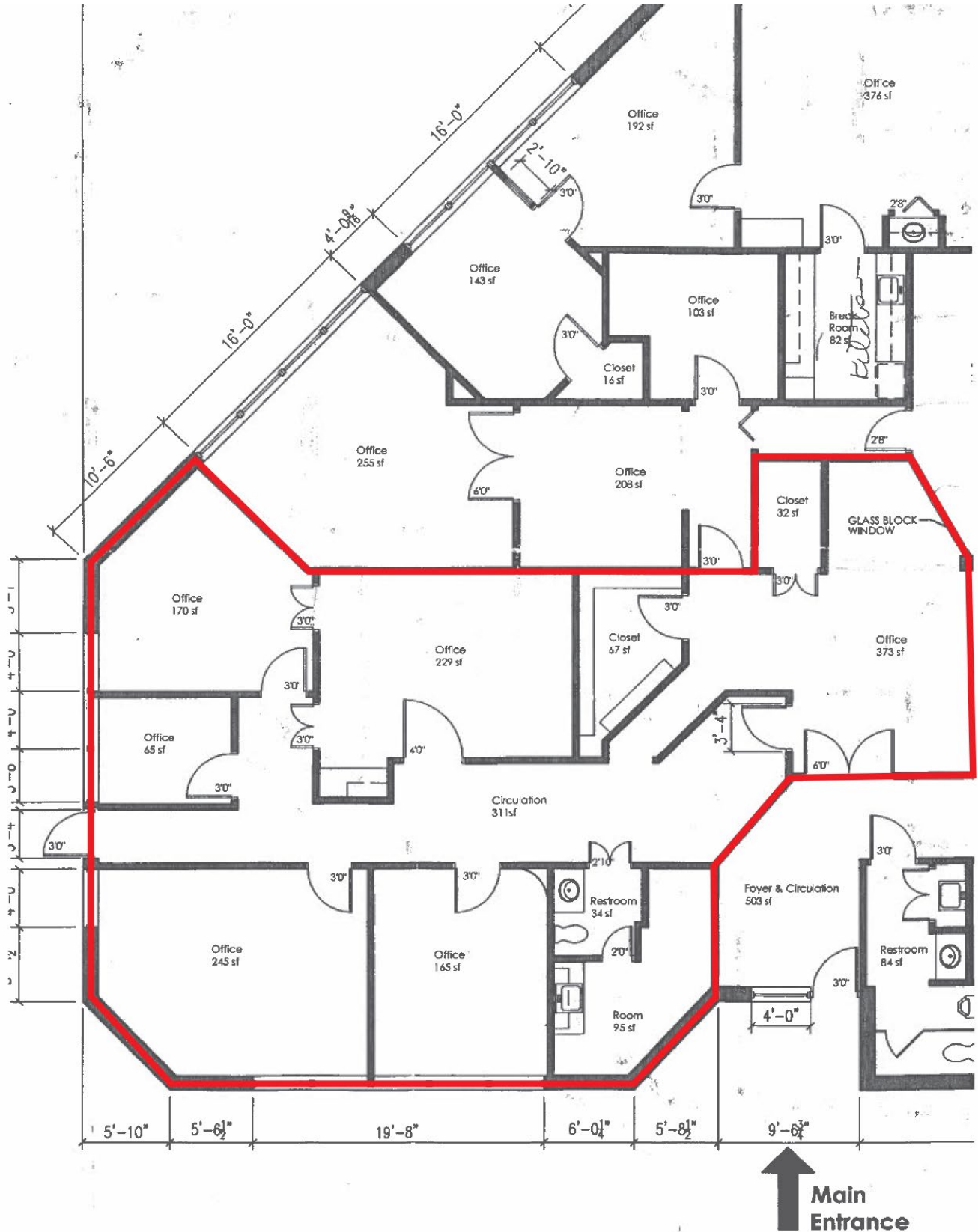
**Cade Flesner**  
+1 760 889 2305  
cade@naisullivangroup.com

**Abbey Sullivan**  
+1 405 863 7590  
abbey@naisullivangroup.com

**+1 405 840 0600 OFFICE**

4045 N.W. 64<sup>th</sup> Street, Suite 340  
Oklahoma City, OK 73116

**www.naisullivangroup.com**



**Matthew Pierce**  
 +1 405 203 3636  
 matt@naisullivangroup.com

**Cade Flesner**  
 +1 760 889 2305  
 cade@naisullivangroup.com

**Abbey Sullivan**  
 +1 405 863 7590  
 abbey@naisullivangroup.com

**+1 405 840 0600 OFFICE**

4045 N.W. 64<sup>th</sup> Street, Suite 340  
 Oklahoma City, OK 73116

[www.naisullivangroup.com](http://www.naisullivangroup.com)



Population	1 Mile: 9,737	3 Miles: 87,969	5 Miles: 201,278
Average Household Income	1 Mile: \$76,468	3 Miles: \$80,461	5 Miles: \$70,040
Total Households	1 Mile: 4,849	3 Miles: 40,848	5 Miles: 89,228

**Matthew Pierce**  
+1 405 203 3636  
matt@naisullivangroup.com

**Cade Flesner**  
+1 760 889 2305  
cade@naisullivangroup.com

**Abbey Sullivan**  
+1 405 863 7590  
abbey@naisullivangroup.com

**+1 405 840 0600 OFFICE**

4045 N.W. 64<sup>th</sup> Street, Suite 340  
Oklahoma City, OK 73116

**www.naisullivangroup.com**