

8241 S. Walker  
Avenue  
Oklahoma City, OK  
73139

Office Space For Lease

Suite 101: 1,254 RSF

Suite 104: 3,469 RSF

\$14.00/RSF Full Service



HAVE QUESTIONS?  
405.840.0600  
NAISULLIVANGROUP.COM

Matthew Pierce  
405.203.3636  
MATT@NAISULLIVANGROUP.COM

**NAI** Sullivan Group

Cade Flesner  
760.889.2305  
CADE@NAISULLIVANGROUP.COM





- Suite 101: 1,254 RSF
- Suite 104: 3,469 RSF Class B Office Space
- 7 Private Offices
- Break Room
  
- 40+ Free Parking Spaces
- Located in Willow Brook Office Park
- 2 Miles from I-240



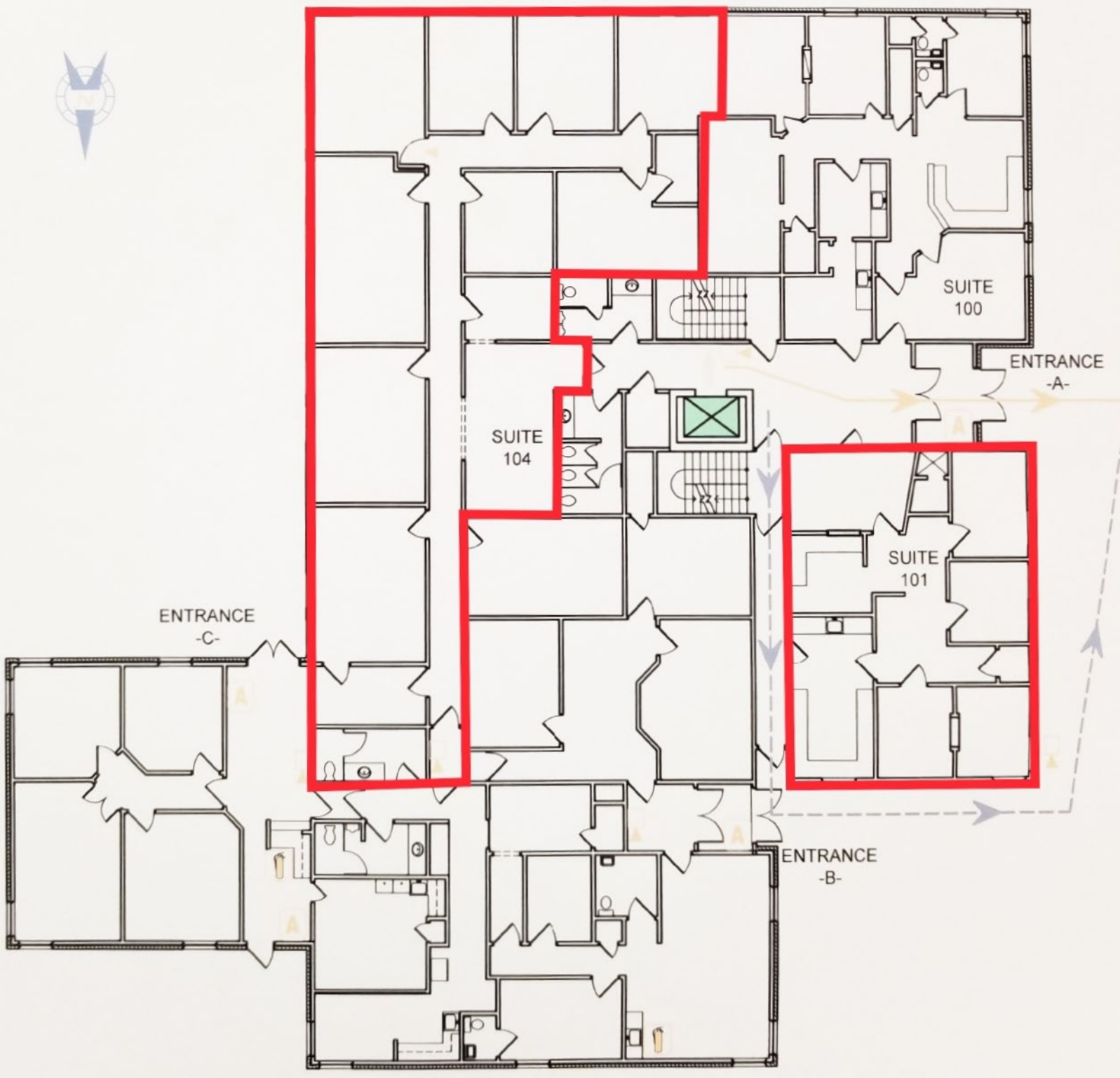
HAVE QUESTIONS?  
405.840.0600  
NAISULLIVANGROUP.COM

Matthew Pierce  
405.203.3636  
MATT@NAISULLIVANGROUP.COM

**NAI** Sullivan Group

Cade Flesner  
760.889.2305  
CADE@NAISULLIVANGROUP.COM





HAVE QUESTIONS?  
405.840.0600  
NAISULLIVANGROUP.COM

Matthew Pierce  
405.203.3636  
MATT@NAISULLIVANGROUP.COM

**NAI** Sullivan Group

Cade Flesner  
760.889.2305  
CADE@NAISULLIVANGROUP.COM



	1 MILE	3 MILE	5 MILE
POPULATION	10,781	103,655	233,184
AVERAGE HOUSEHOLD INCOME	\$45,674	\$50,286	\$52,811
TOTAL HOUSEHOLDS	4,760	41,461	86,837

No warranty or representation, express or implied, is made as to the accuracy of the information contained herein, and the same is submitted subject to errors, omissions, change of price, rental or other conditions, prior to sale, lease, or financing, or withdrawal without notice, and of any special listing conditions imposed by our principals no warranties or representations are made as to the condition of the property or any hazards contained therein are any to be implied.