



Lease Price:
\$550-\$750/Month
Full Service

Founders Tower

5900 Mosteller Drive, Suite 21

Oklahoma City, Oklahoma 73112

PROPERTY HIGHLIGHTS

- Furnished, Executive Class Suites Located in Historic Landmark Founders Tower
- Flat Monthly Fee-Full Service Lease
- Various Suite Sizes, Including Cubicles
- 24-Hour Access & Concierge
- Secured Access with Key Fob
- Furnished Break Room
- Conference Room with Audio & Video Capabilities
- Office Supplies/Printer/Scanning Room
- Male & Female ADA Restrooms
- Free On-Site Parking
- 9 Foot Ceiling Height

SUITES AVAILABLE

- Suite 1: 219 RSF
- Suite 2: 219 RSF
- Suite 3: 248 RSF
- Suite 4: 160 RSF
- Suite 5: 236 RSF
- Suite 6: 237 RSF
- Suite 7: 300 RSF
- Suite 10: 178 RSF
- Suite 11: 146 RSF
- Suite 12: 141 RSF
- 2nd Floor SF: 5,343 SF
- AT&T Fiber
- Collaborative Space
- Fast & Secure Internet with a Dedicated Firewall for Each Business
- Natural Lighting

TOTAL SF **178,000 RSF on 7.37 Acres MOL**

BUILT **1964 / 2008**

Amanda Sullivan
+1 405 323 6423
amanda@naisullivangroup.com

+1 405 840 0600 OFFICE

4045 N.W. 64th Street, Suite 340
Oklahoma City, OK 73116

www.naisullivangroup.com

EXECUTIVE SUMMARY

The historic Founder's Tower has Executive Class Suites available on the second floor. The executive suites provide private offices and cubicles for lease, furnished or unfurnished. The amenities include a concierge, 24-hour secure access with a key fob, a stocked break room, free parking, plus **LOCATION, LOCATION, LOCATION!**

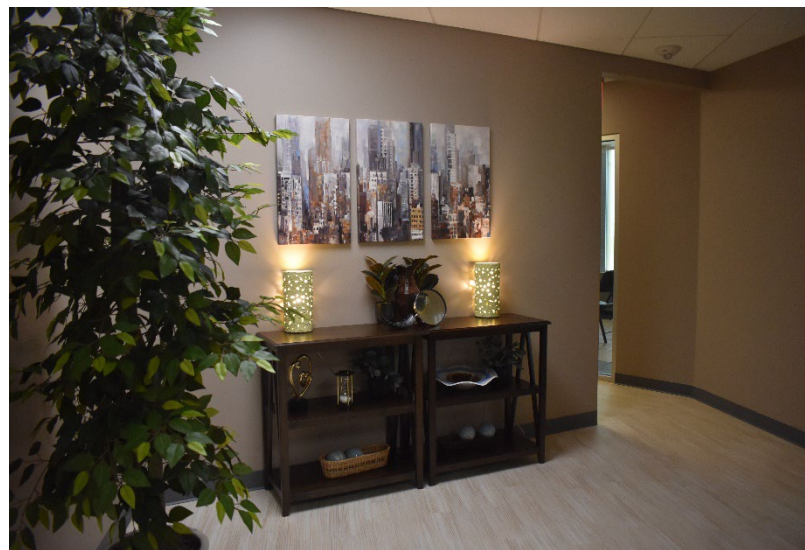
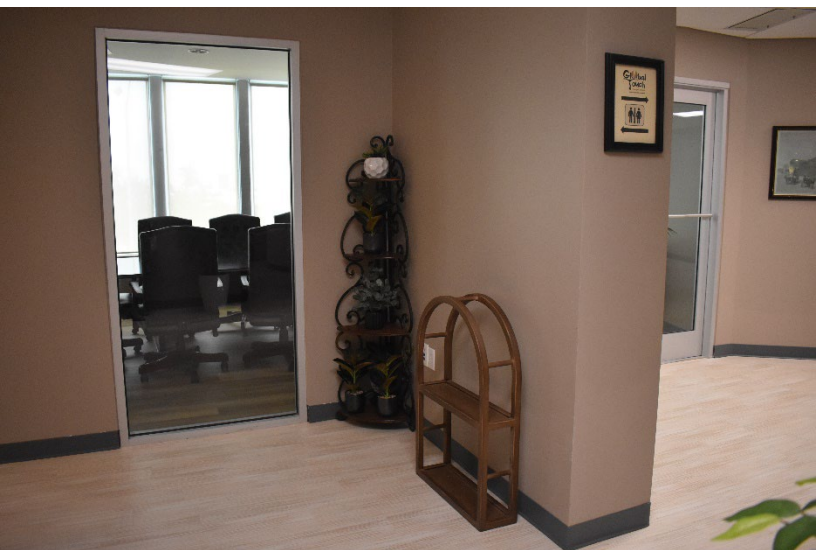
Founder's Tower has a 360-degree panoramic view. The Googie-Style architecture is on the National Register of Historic Places since April 15, 2013. Founder's Tower is a multi-use building with office space and luxury condominiums.

Founder's Tower is a prime location in northwest Oklahoma City. Easy access to I-44 and Hefner Parkway. Close to Integris Baptist Medical Center, banking, shopping and numerous restaurants. Founder's Tower is west of May Avenue and the redevelopment of Mayfair Village Shopping center and national retail brands.



Amanda Sullivan
+1 405 323 6423
amanda@naisullivangroup.com

+1 405 840 0600 OFFICE
 4045 N.W. 64th Street, Suite 340
 Oklahoma City, OK 73116
www.naisullivangroup.com

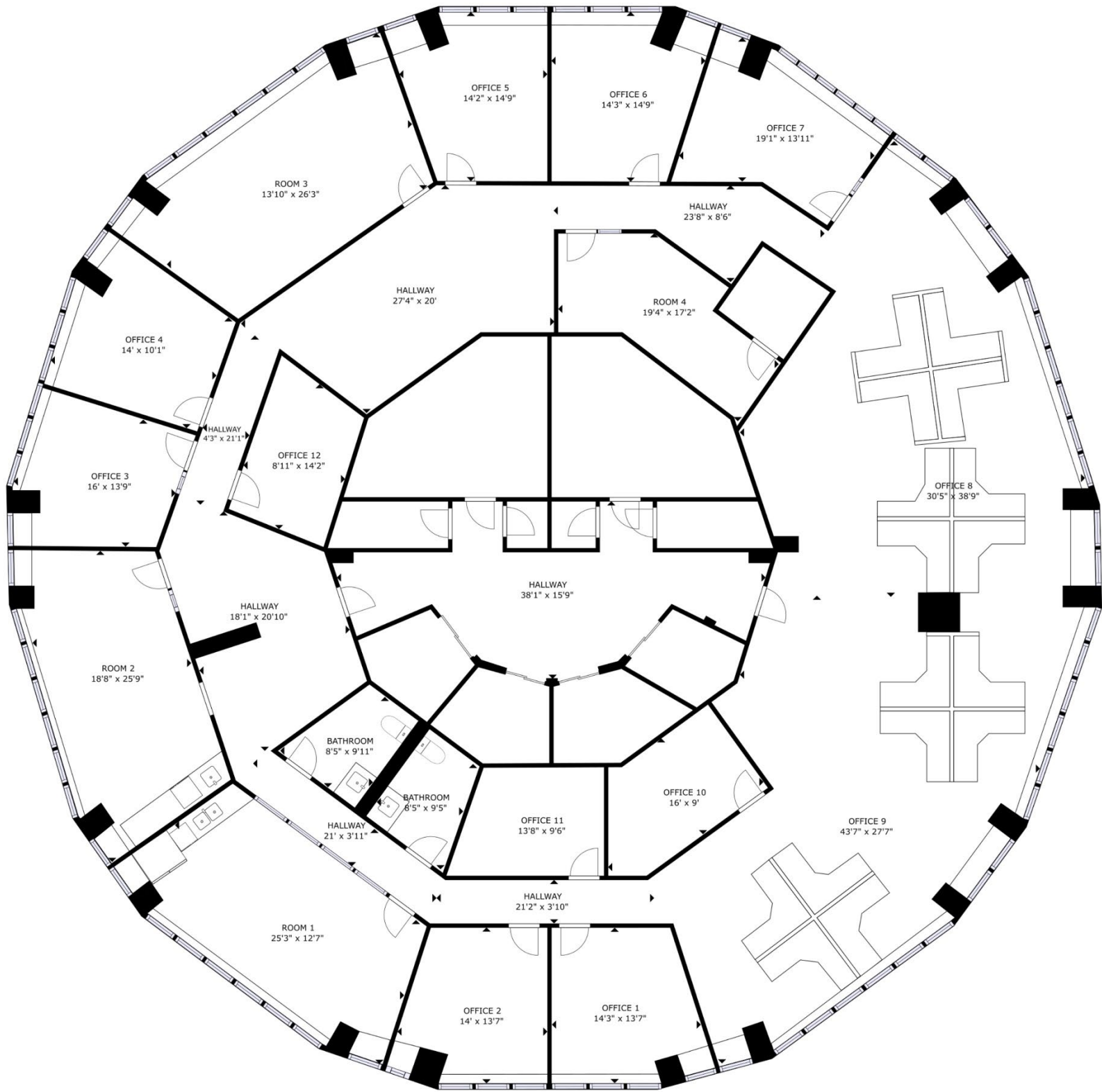


Amanda Sullivan
+1 405 323 6423
amanda@naisullivangroup.com

+1 405 840 0600 OFFICE

4045 N.W. 64th Street, Suite 340
Oklahoma City, OK 73116

www.naisullivangroup.com

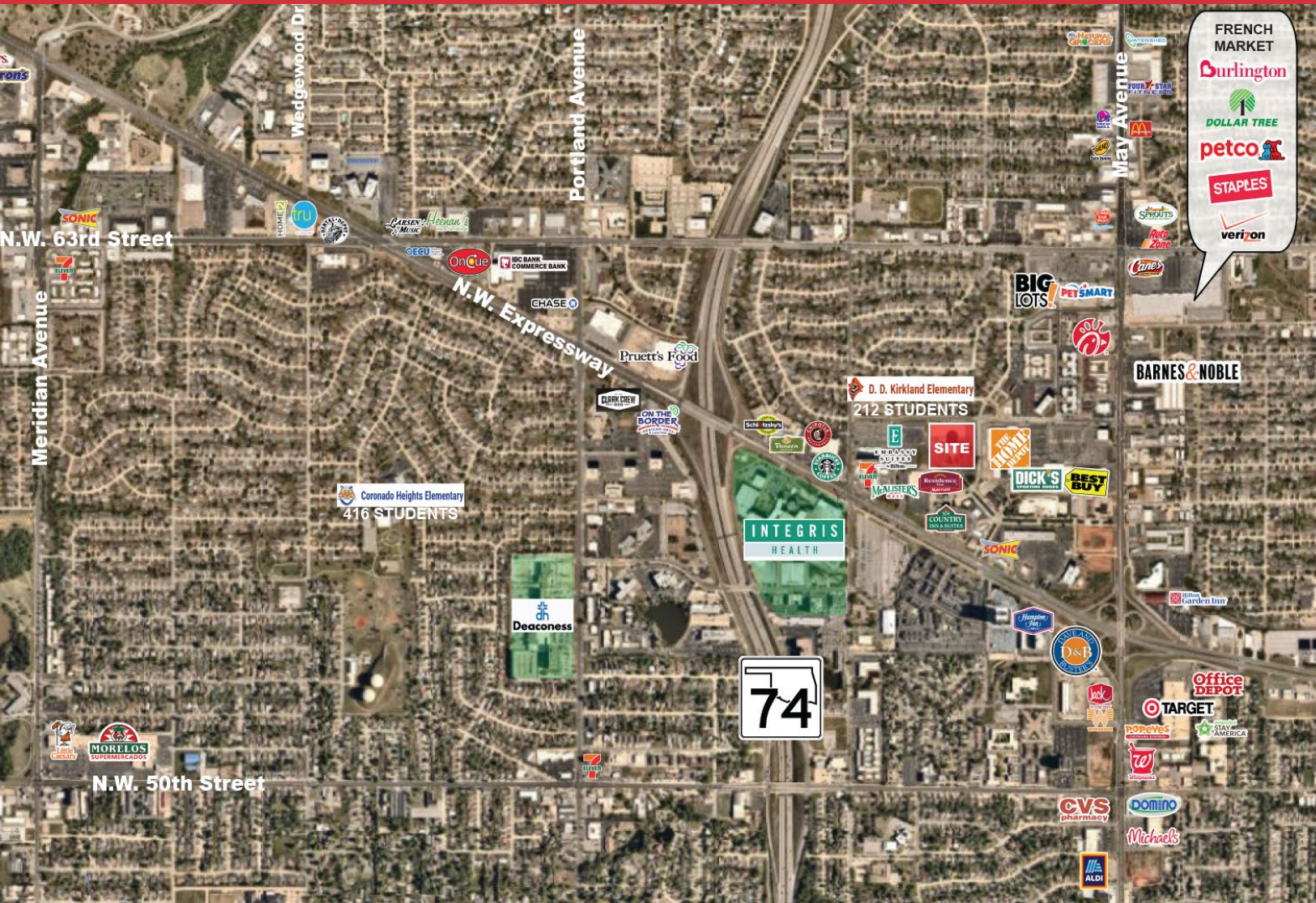


Amanda Sullivan
+1 405 323 6423
amanda@naisullivangroup.com

+1 405 840 0600 OFFICE

4045 N.W. 64th Street, Suite 340
Oklahoma City, OK 73116

www.naisullivangroup.com



Population	1 Mile: 11,465	3 Miles: 88,030	5 Miles: 237,952
Average Household Income	1 Mile: \$81,675	3 Miles: \$79,276	5 Miles: \$74,845
Total Households	1 Mile: 5,817	3 Miles: 40,598	5 Miles: 103,979

Amanda Sullivan
+1 405 323 6423
amanda@naisullivangroup.com

+1 405 840 0600 OFFICE

4045 N.W. 64th Street, Suite 340
 Oklahoma City, OK 73116

www.naisullivangroup.com