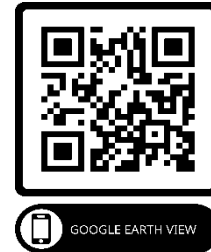


NW 10TH STREET & MUSTANG ROAD OKLAHOMA CITY, OK 73099

Industrial Land For Sale
64.84 Acres MOL
\$11,000,000 (\$3.89/SF)



REED

COMMERCIAL
REAL ESTATE

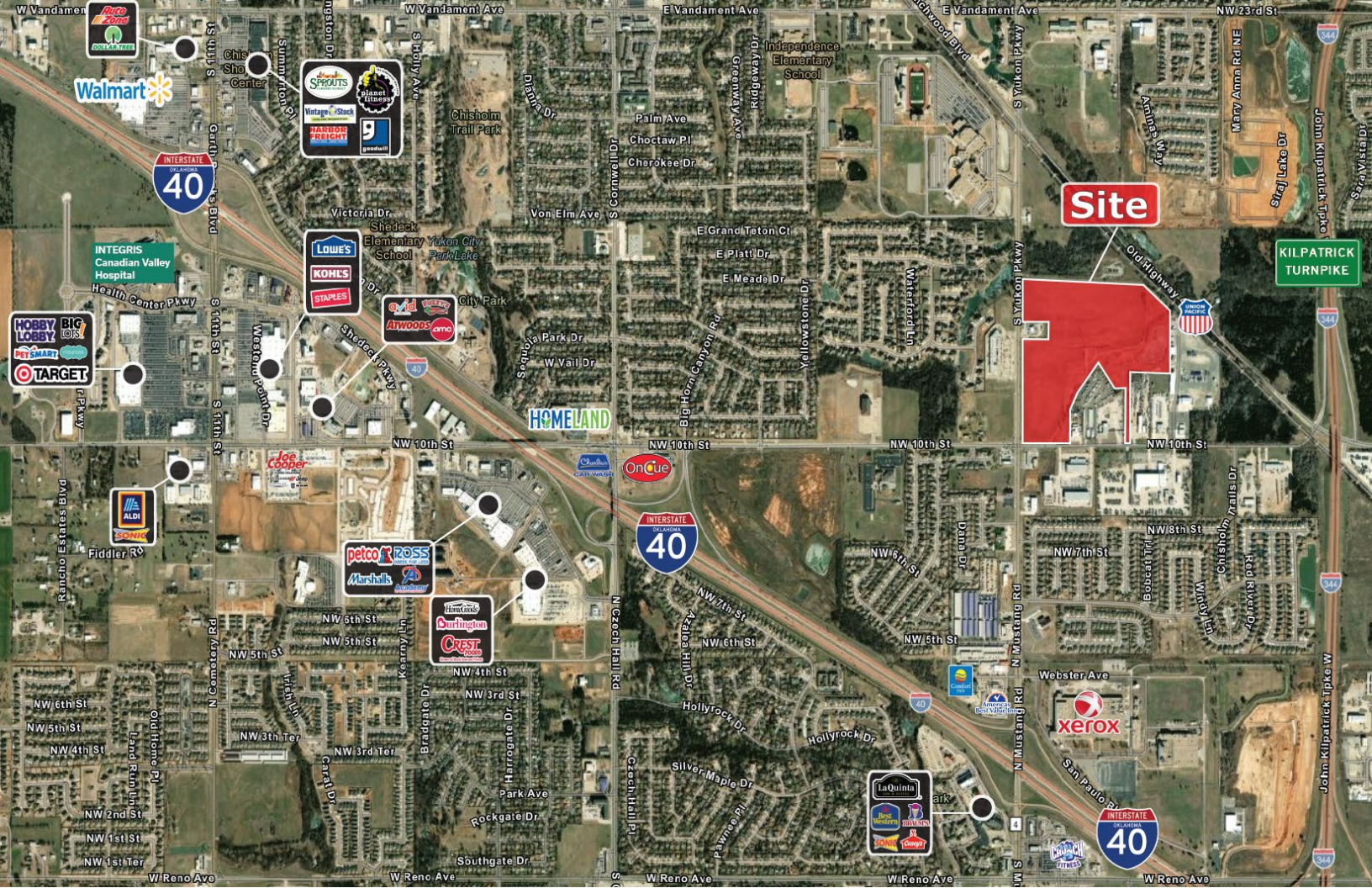


NAIRED

405.840.0600
NAIRED.COM

BOB SULLIVAN, CCIM
405.641.9798
BOB@NAIRED.COM

CLARK EVERETT
405.985.8424
CLARK@NAIRED.COM



PROPERTY HIGHLIGHTS

- Adjacent to Union Pacific Rail Line
- Site appears to afford low-cost rail connectivity
- Level Ground
- Water & Sewer Lines Along NW 10th Street
- Great for Industrial Development
- Retail Development Possible Along Mustang Road/Yukon Parkway
- Zoned: I-2 Moderate Industrial

LOCATION HIGHLIGHTS

- Within 1 Mile of I-40 Entrance/Exit
- Within 1 Mile of Kilpatrick Turnpike

NAIRED

405.840.0600

NAIRED.COM

BOB SULLIVAN, CCIM

405.641.9798

BOB@NAIRED.COM

CLARK EVERETT

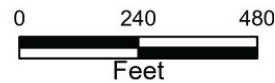
405.985.8424

CLARK@NAIRED.COM



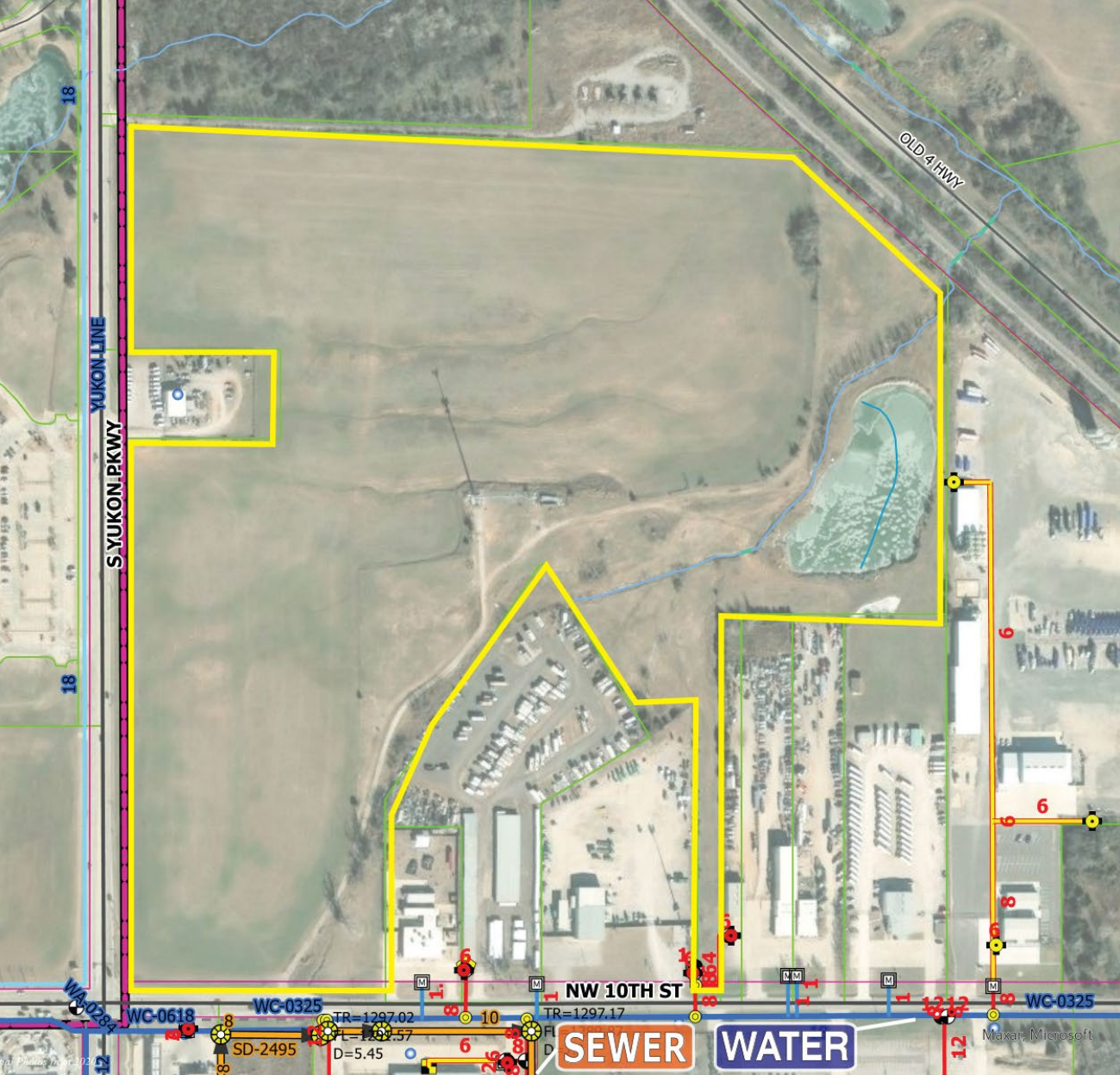
ATLAS

The City nor any of its Trusts nor any of their employees, officers, or agents warrant or represent that the information or data on this document is accurate or appropriate for use or re-use for any purpose. The user of this document assumes the sole duty and full responsibility for the verification of the information and data contained therein. Any use of reliance upon this document of the information or data contained therein is solely, totally, and exclusively at the users own risk.



Legend

- Wastewater Main
- Fire Hydrant
- Private Hydrant
- Abandoned
- Water Main
- Yukon Main
- Storm Drain



DEMOGRAPHICS

	1 MILE	3 MILE	5 MILE
POPULATION	5,025	70,590	111,653
AVERAGE HOUSEHOLD INCOME	\$97,773	\$87,846	\$86,605
TOTAL HOUSEHOLDS	1,956	27,071	42,328



405.840.0600
NAIRED.COM

FOLLOW US @NAIRED_CRE



No warranty or representation, express or implied, is made as to the accuracy of the information contained herein, and the same is submitted subject to errors, omissions, change of price, rental or other conditions, prior to sale, lease, or financing, or withdrawal without notice, and of any special listing conditions imposed by our principals no warranties or representations are made as to the condition of the property or any hazards contained therein are any to be implied.