

The
Collonade
9600-9652
N. May Avenue
Oklahoma City, OK
73120

Office / Retail Space
For Lease

1,030 SF-1,595 SF OFFICE
\$14.00/SF Full Service

1,100 SF-2,848 SF RETAIL
\$12.00/SF NNN



HAVE QUESTIONS?
405.840.0600
NAISULLIVANGROUP.COM

Matthew Pierce
405.203.3636
MATT@NAISULLIVANGROUP.COM

NAI Sullivan Group

Cade Flesner
760.889.2305
CADE@NAISULLIVANGROUP.COM



SUITES AVAILABLE

- Suite 210: 1,120 SF OFFICE
- Suite 211: 1,595 SF OFFICE
- Suite 270: 1,030 SF OFFICE
- Suite 272: 1,351 SF OFFICE
- Suite 274: 1,595 SF OFFICE
- Suite 275: 1,173 SF OFFICE
- Suite 276: 1,320 SF OFFICE
- 9612 N. May Ave: 1,100 SF RETAIL
- 9628 N. May Ave: 1,845 SF RETAIL
- 9638 N. May Ave: 2,200 SF RETAIL
- 9654 N. May Ave: 2,848 SF RETAIL

- Multi-Tenant Office Suites Available on Second Floor
- Abundant Parking
- Natural Lighting within Offices
- Tenant Improvement Allowance Available
- Well Maintained Common Areas
- Elevator Access to Second Floor
- High Traffic Count along N. May Avenue
- Close Proximity to Lake Hefner Parkway

HAVE QUESTIONS?

405.840.0600

NAISULLIVANGROUP.COM

Matthew Pierce

405.203.3636

MATT@NAISULLIVANGROUP.COM

NAI Sullivan Group

Cade Flesner

760.889.2305

CADE@NAISULLIVANGROUP.COM



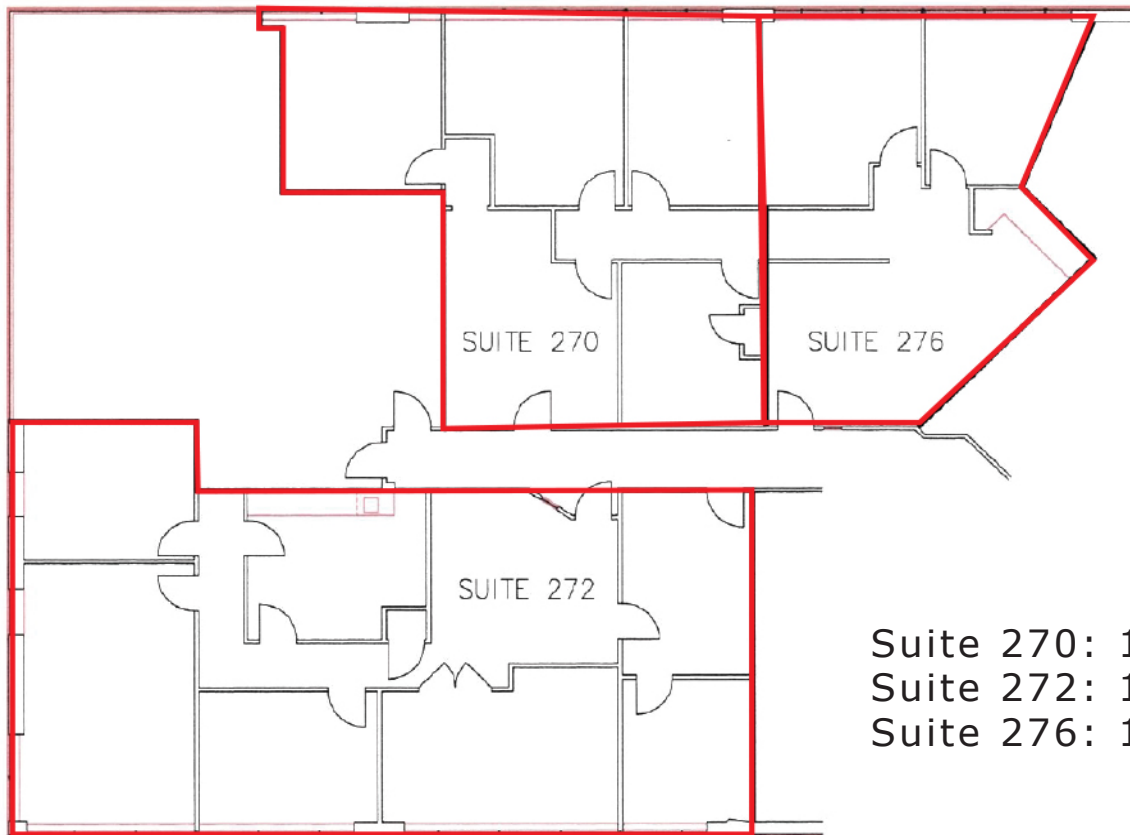
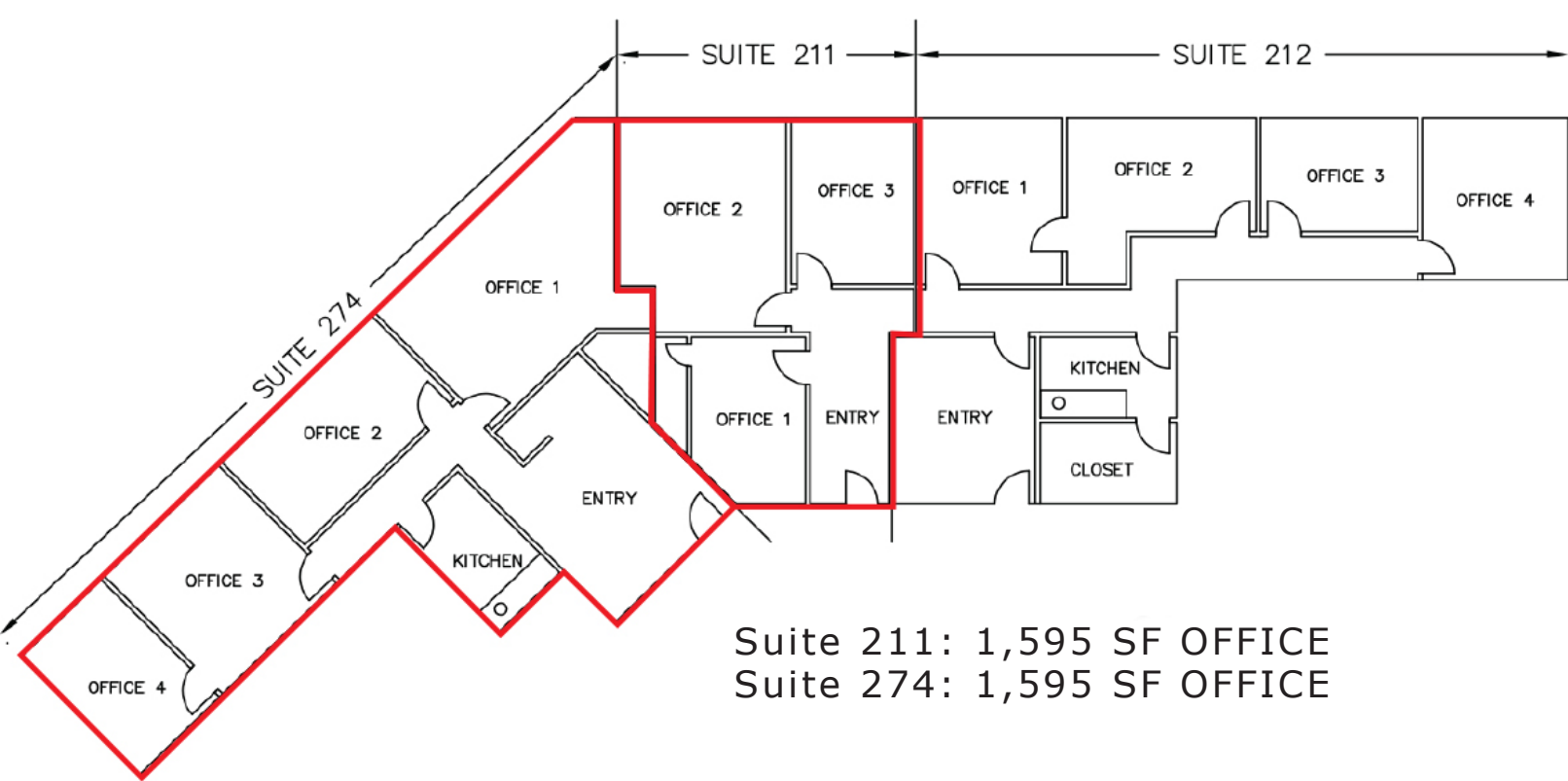
| | 1 MILE | 3 MILE | 5 MILE |
|--------------------------|----------|----------|----------|
| POPULATION | 8,666 | 71,268 | 200,264 |
| AVERAGE HOUSEHOLD INCOME | \$82,320 | \$82,952 | \$81,159 |
| TOTAL HOUSEHOLDS | 4,425 | 33,538 | 90,027 |

HAVE QUESTIONS?
 405.840.0600
 NAISULLIVANGROUP.COM

Matthew Pierce
 405.203.3636
 MATT@NAISULLIVANGROUP.COM

NAI Sullivan Group

Cade Flesner
 760.889.2305
 CADE@NAISULLIVANGROUP.COM

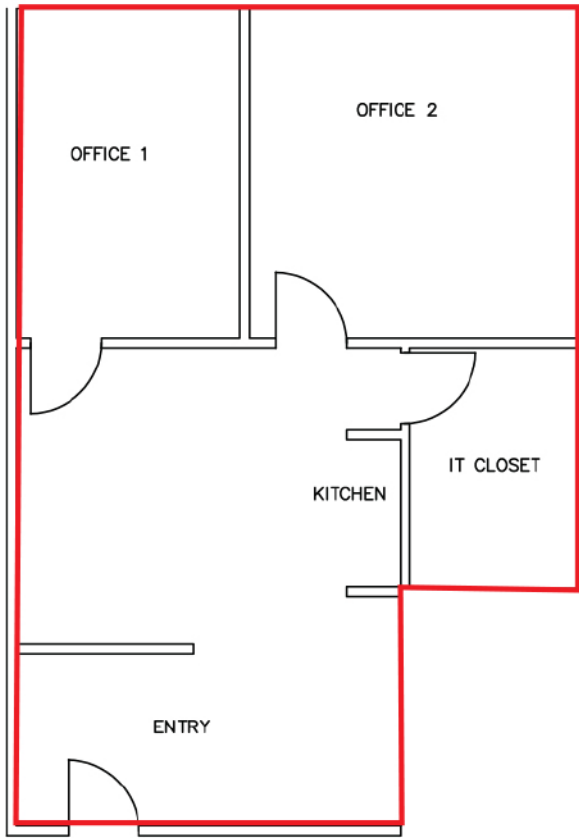


HAVE QUESTIONS?
405.840.0600
NAISULLIVANGROUP.COM

Matthew Pierce
405.203.3636
MATT@NAISULLIVANGROUP.COM

NAI Sullivan Group

Cade Flesner
760.889.2305
CADE@NAISULLIVANGROUP.COM



Suite 210: 1,120 SF OFFICE



HAVE QUESTIONS?
405.840.0600
NAISULLIVANGROUP.COM

Matthew Pierce
405.203.3636
MATT@NAISULLIVANGROUP.COM

NAI Sullivan Group

Cade Flesner
760.889.2305
CADE@NAISULLIVANGROUP.COM



HAVE QUESTIONS?
405.840.0600
NAISULLIVANGROUP.COM

Matthew Pierce
405.203.3636
MATT@NAISULLIVANGROUP.COM

NAI Sullivan Group

Cade Flesner
760.889.2305
CADE@NAISULLIVANGROUP.COM



No warranty or representation, express or implied, is made as to the accuracy of the information contained herein, and the same is submitted subject to errors, omissions, change of price, rental or other conditions, prior to sale, lease, or financing, or withdrawal without notice, and of any special listing conditions imposed by our principals no warranties or representations are made as to the condition of the property or any hazards contained therein are any to be implied.

NAI Sullivan Group

405.840.0600
NAISULLIVANGROUP.COM

FOLLOW US   