

Lease Price: Negotiable NNN



**Uptown Plaza**  
**7505-7537 S.E. 15<sup>th</sup> Street**  
Midwest City, Oklahoma 73110

**PROPERTY HIGHLIGHTS**

- Irregular Bay Dimensions
- 18,752 CPD on S.E. 15<sup>th</sup> Street
- Ample Parking
- Located on Hard Corner-Great Visibility
- Built 1959
  
- NNN Charges: \$1.84/SF
- \$0.62/Taxes
- \$0.70/Insurance
- \$0.52/CAM

**SUITES AVAILABLE**

- Suite 7511: 15,265 SF
- Suite 7517: 15,000 SF
- Suite 7537: 1,325 SF
- Suite 7431: 10,000 SF
- Suite 1418: 1,000 SF
- Suite 1420: 750 SF
- Suite 1422: 1,250 SF
- Suite 1432: 4,500 SF
- Suite 1433: 664 SF
- Suite 1436: 2,100 SF
- Suite 1440: 1,400 SF
- Suite 7501: 1,600 SF

**David Hartnack**  
+1 405 761 8955  
davidh@naisullivangroup.com

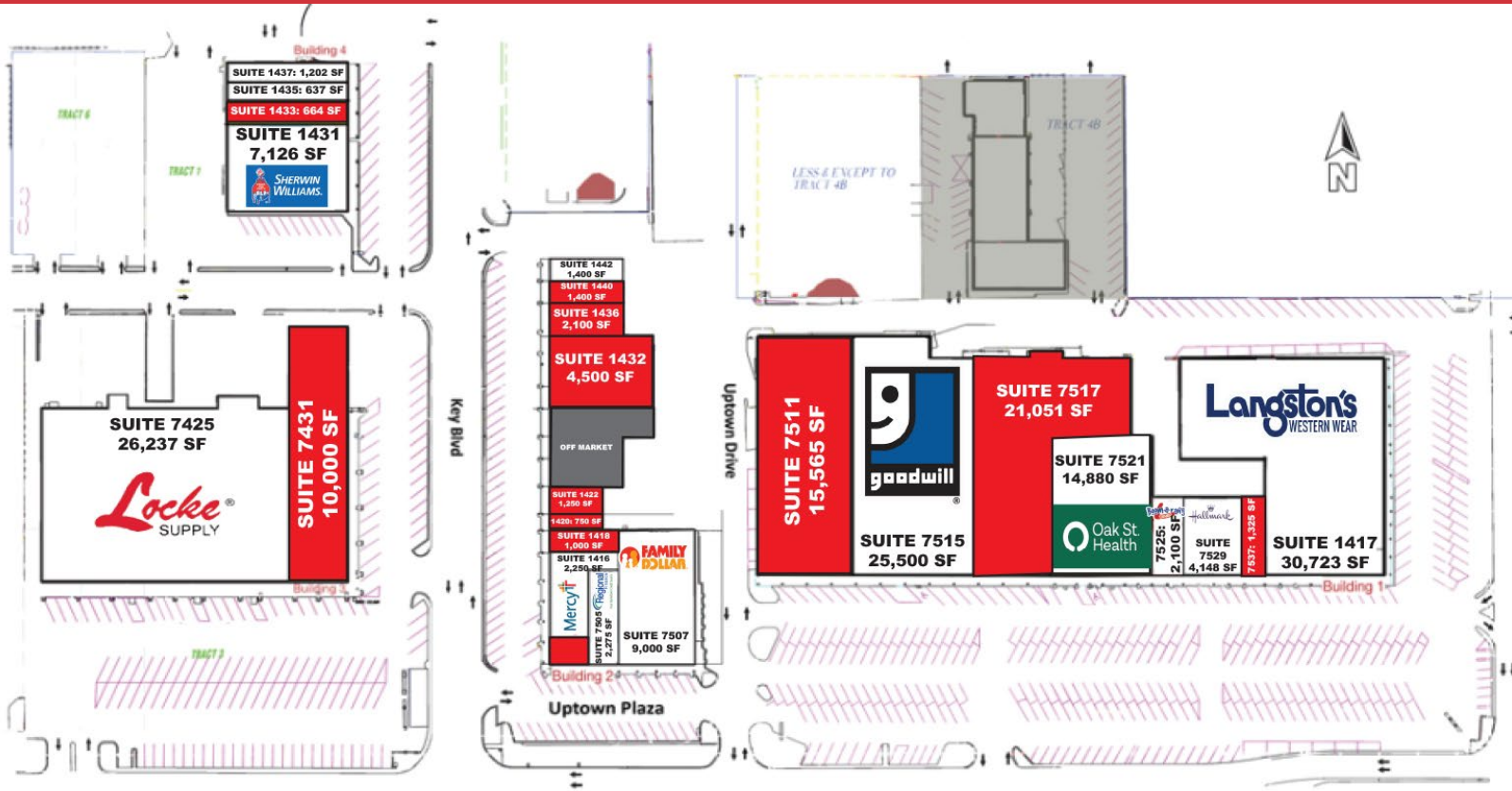
**Sam Swanson**  
+1 405 208 2046  
sam@naisullivangroup.com

**Nathan Wilson**  
+1 405 760 5327  
nathan@naisullivangroup.com

**+1 405 840 0600 OFFICE**

4045 N.W. 64<sup>th</sup> Street, Suite 340  
Oklahoma City, OK 73116

**www.naisullivangroup.com**



**David Hartnack**  
 +1 405 761 8955  
 davidh@naisullivangroup.com

**Sam Swanson**  
 +1 405 208 2046  
 sam@naisullivangroup.com

**Nathan Wilson**  
 +1 405 760 5327  
 nathan@naisullivangroup.com

**+1 405 840 0600 OFFICE**

4045 N.W. 64<sup>th</sup> Street, Suite 340  
 Oklahoma City, OK 73116

[www.naisullivangroup.com](http://www.naisullivangroup.com)



**David Hartnack**  
+1 405 761 8955  
davidh@naisullivangroup.com

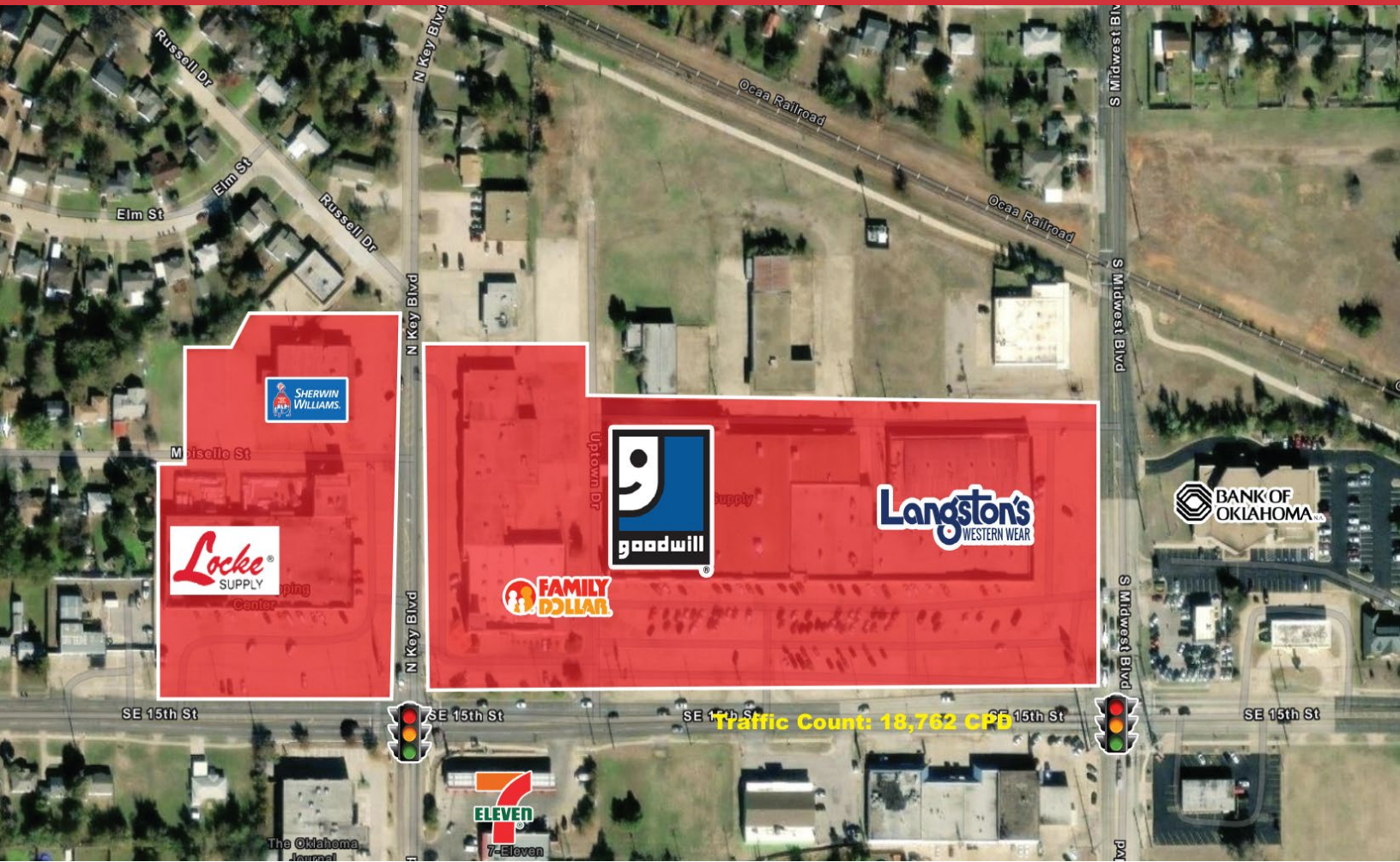
**Sam Swanson**  
+1 405 208 2046  
sam@naisullivangroup.com

**Nathan Wilson**  
+1 405 760 5327  
nathan@naisullivangroup.com

**+1 405 840 0600 OFFICE**

4045 N.W. 64<sup>th</sup> Street, Suite 340  
Oklahoma City, OK 73116

[www.naisullivangroup.com](http://www.naisullivangroup.com)



**David Hartnack**  
+1 405 761 8955  
davidh@naisullivangroup.com

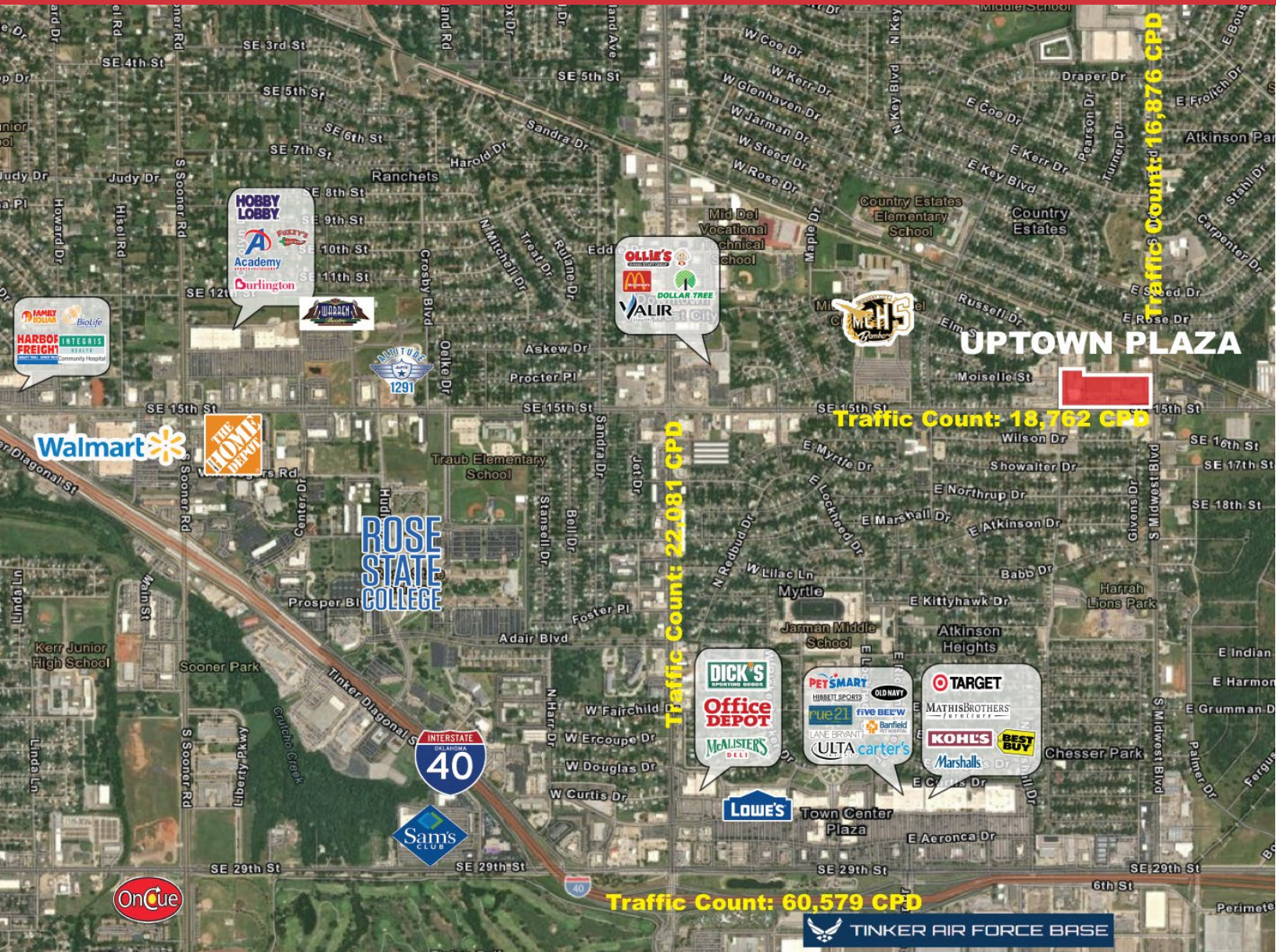
**Sam Swanson**  
+1 405 208 2046  
sam@naisullivangroup.com

**Nathan Wilson**  
+1 405 760 5327  
nathan@naisullivangroup.com

**+1 405 840 0600 OFFICE**

4045 N.W. 64<sup>th</sup> Street, Suite 340  
Oklahoma City, OK 73116

[www.naisullivangroup.com](http://www.naisullivangroup.com)



Population	1 Mile: 9,957	3 Miles: 66,795	5 Miles: 119,027
Average Household Income	1 Mile: \$55,032	3 Miles: \$63,983	5 Miles: \$66,718
Total Households	1 Mile: 4,295	3 Miles: 27,305	5 Miles: 47,607

**David Hartnack**  
 +1 405 761 8955  
 davidh@naisullivangroup.com

**Sam Swanson**  
 +1 405 208 2046  
 sam@naisullivangroup.com

**Nathan Wilson**  
 +1 405 760 5327  
 nathan@naisullivangroup.com

**+1 405 840 0600 OFFICE**

4045 N.W. 64<sup>th</sup> Street, Suite 340  
 Oklahoma City, OK 73116

**www.naisullivangroup.com**

NO WARRANTY OR REPRESENTATION, EXPRESS OR IMPLIED, IS MADE AS TO THE ACCURACY OF THE INFORMATION CONTAINED HEREIN, AND THE SAME IS SUBMITTED SUBJECT TO ERRORS, OMISSIONS, CHANGE OF PRICE, RENTAL OR OTHER CONDITIONS, PRIOR SALE, LEASE OR FINANCING, OR WITHDRAWAL WITHOUT NOTICE, AND OF ANY SPECIAL LISTING CONDITIONS IMPOSED BY OUR PRINCIPALS NO WARRANTIES OR REPRESENTATIONS ARE MADE AS TO THE CONDITION OF THE PROPERTY OR ANY HAZARDS CONTAINED THEREIN ARE ANY TO BE IMPLIED.